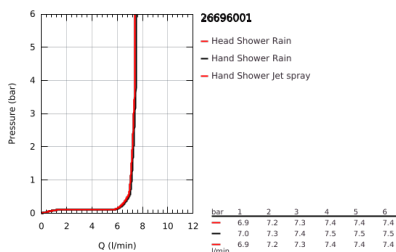
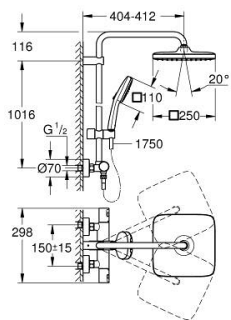


26 696 001 VITALIO COMFORT 250 SHOWER SYSTEM WITH THERMOSTAT FOR WALL MOUNTING



PRODUCT DESCRIPTION (1/2)

- Colour: Chrome
- Consisting of:
 - horizontal swivable 390 mm projection shower arm
 - exposed thermostatic shower with Aquadimmer function
 - allows change between:
 - head shower Vitalio Comfort 250
 - Rain spray pattern
 - maximum flow rate (at 3 bar): 7.3 l/min
 - head shower with black rear cover
 - with ball joint, rotation angle $\pm 10^\circ$
 - hand shower Vitalio Comfort 110 (26 397)
 - 2 spray patterns: Rain, Jet
 - maximum flow rate (at 3 bar): 7.4 l/min
 - adjustable height via gliding element
 - shower hose VitalioFlex Comfort 1750 mm 1/2" x 1/2" (28 745)
 - AquaCalibrator limits maximum flow rate of system (at 3 bar): 7.4 l/min
 - GROHE EcoJoy - less water, perfect flow
 - GROHE TurboStat - compact cartridge with wax thermoelement
 - GROHE SafeStop - safety button at 38°C
 - GROHE SafeStop Plus - optional temperature limiter at 43°C included
 - GROHE SmartSwitch - easily rotate the dial to enjoy your preferred spray option
 - GROHE DreamSpray - perfect spray pattern
 - GROHE LongLife finish
 - GROHE SpeedClean - effortless limescale removal
 - Inner WaterGuide - inner insulation for surface protection
 - ShockProof silicone ring prevents damage caused by a shower falling
 - TwistStop - to prevent hose from twisting
 - suitable for instantaneous heaters from 18 kW/h
 - minimum flow rate 5 l/min.
 - optional upgrade: GROHE EasyReach tray (26 362)
 - GROHE QuickSpanner included, but not for matte black variant
 - 5 color packaging

Pure Freude
an Wasser

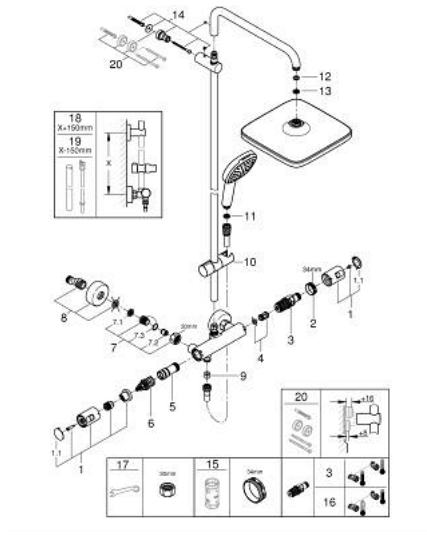


26 696 001 **VITALIO COMFORT 250 SHOWER SYSTEM WITH THERMOSTAT FOR WALL MOUNTING**

PRODUCT DESCRIPTION (2/2)

- Consumer edition

26 696 001 VITALIO COMFORT 250 SHOWER SYSTEM WITH THERMOSTAT FOR WALL MOUNTING



SPARE PARTS, November 2021 – now

- 1: Handle (Spare part-nr. 47728000)
- 1.1: Cover Cap (Spare part-nr. 6458500M)
- 2: retaining ring (Spare part-nr. 47743000)
- 3: Thermostatic compact cartridge 1/2" (Spare part-nr. 47439000)
- 4: Sound absorber (Spare part-nr. 47398000)
- 5: Water flow (Spare part-nr. 47751000)
- 6: Aquadimmer (Spare part-nr. 12433000)
- 7: Non-return valve (Spare part-nr. 47189000)
- 7.1: Filter (Spare part-nr. 0726400M)
- 7.2: Non-return valve (Spare part-nr. 08565000)
- 7.3: O-Ring Ø17 x Ø2 (Spare part-nr. 0305500M)
- 8: S-union (Spare part-nr. 12662000)
- 9: Non-return valve (Spare part-nr. 08565000)
- 10: Sliding piece (Spare part-nr. 27723001)
- 11: Strainer (Spare part-nr. 0700200M)
- 12: Fibre seal dia. Ø 18,5 x Ø 12 x 2 (Spare part-nr. 0138900M)
- 13: Strainer (Spare part-nr. 48007000)
- 14: Outlet shower holder (Spare part-nr. 48423000)
- 15: Socket Spanner (Spare part-nr. 19332000)*
- 16: GROHE TurboStat cartridge 1/2" (Spare part-nr. 47175000)*
- 17: Special Spanner (Spare part-nr. 19377000)*
- 18: Shower system pipe for retrofitting (Spare part-nr. 48514000)*
- 19: Shower system pipe for retrofitting (Spare part-nr. 48515000)*
- 20: Spacer (Spare part-nr. 26496000)*

* Optional accessories