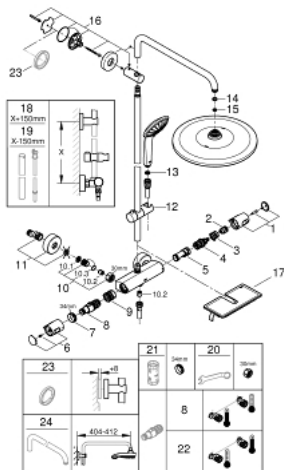


## 26 401 001 VITALIO JOY SYSTEM 310 SHOWER SYSTEM WITH THERMOSTATIC MIXER FOR WALL MOUNTING



### SPARE PARTS, January 2020 – now

- 1: Shut-off handle (Order-nr. 47991000)
- 2: Stop ring (Order-nr. 47986000)
- 3: Stop ring (Order-nr. 47965000)
- 4: Aquadimmer (Order-nr. 47364000)
- 5: Water flow (Order-nr. 47887000)
- 6: Handle (Order-nr. 47992000)
- 7: Fitting ring (Order-nr. 47743000)
- 8: Thermostatic compact cartridge 1/2" (Order-nr. 47439000)
- 9: Race (Order-nr. 47975000)
- 10: Non-return valve (Order-nr. 47189000)
- 10.1: Dirt strainer (Order-nr. 0726400M)
- 10.2: Non-return valve (Order-nr. 08565000)
- 10.3: O-ring  $\varnothing 17 \times \varnothing 2$  (Order-nr. 0305500M)
- 11: S-union (Order-nr. 12662000)
- 12: Glide element (Order-nr. 12140000)
- 13: Dirt strainer (Order-nr. 0700200M)
- 14: Fibre seal  $\varnothing 18,5 \times \varnothing 12 \times 2$  (Order-nr. 0138900M)
- 15: Dirt strainer (Order-nr. 48007000)
- 16: Shower rail holder (Order-nr. 48279000)
- 17: GROHE EasyReach tray (Order-nr. 26362LN1)
- 18: Shower system pipe for retrofitting (Order-nr. 48514000)\*
- 19: Shower system pipe for retrofitting (Order-nr. 48515000)\*
- 20: Special spanner (Order-nr. 19377000)\*
- 21: Socket spanner (Order-nr. 19332000)\*
- 22: GROHE TurboStat cartridge 1/2" (Order-nr. 47175000)\*
- 23: Compensation disc (Order-nr. 27180000)\*
- 24: Shower arm for shower systems (Order-nr. 14047000)\*

\*Special accessories